

## Accessory Installation Guide Shield Opener

|                |                |
|----------------|----------------|
| Accessory Name | Shield opener  |
| Accessory P/N  | 011105         |
| Applicable to  | BenchTurn 7000 |

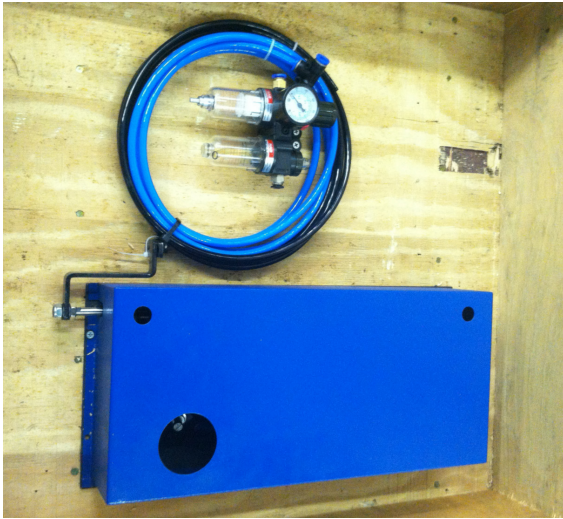
### 1 Requirements

To complete this installation you will require:

- Scissors/utility knife
- 3 mm Allen wrench
- #2 Phillips head screwdriver
- Small blade screwdriver (2 to 2.5 mm)

### 2 Unpacking Instructions

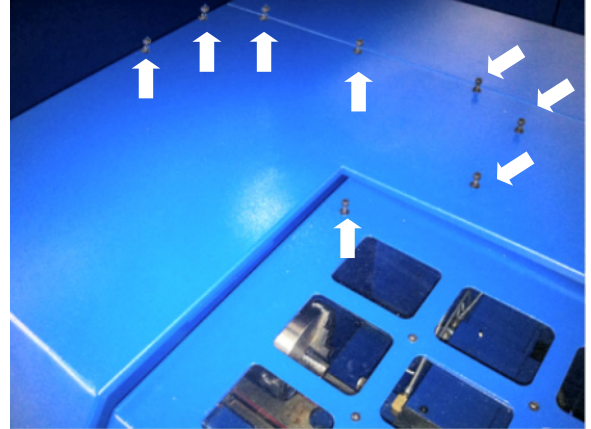
1. Open the crate and gently remove the contents.



2. Carefully cut the ties used to bind the air hoses.

### 3 Install the Shield Opener Assembly

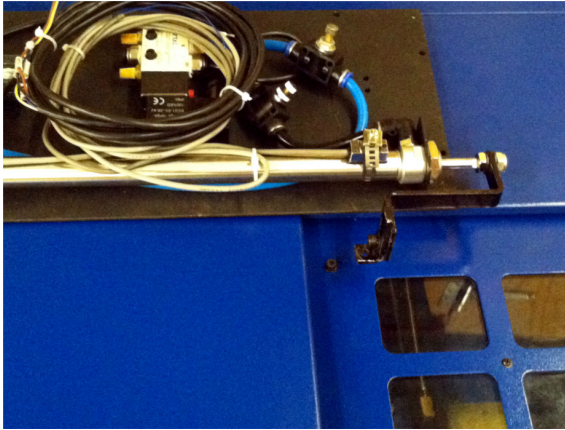
1. Use a 3 mm Allen wrench to remove:
  - Seven pre-mounted socket head cap screws from the enclosure.
  - One pre-mounted socket head cap screw from the shield.



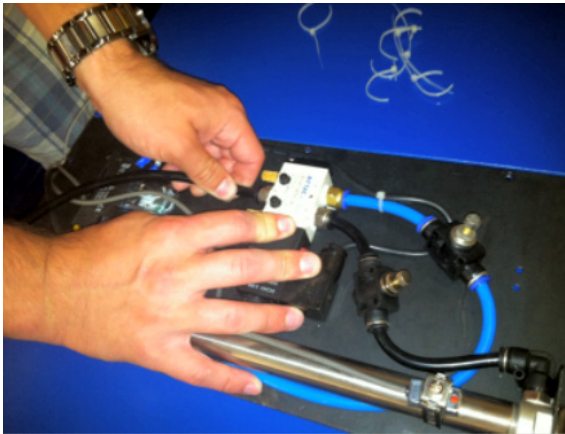
2. Place the shield opener assembly on top of the BenchTurn 7000 enclosure. Align the assembly as shown below.



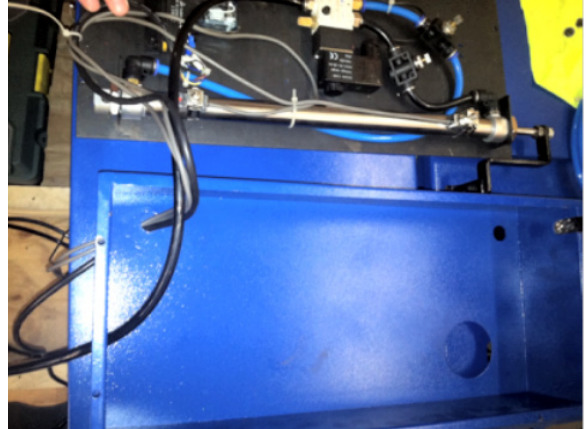
3. Remove the cover of the assembly.



4. Connect the black air supply hose to the available receptacle on the solenoid valve.



5. Route the black hose and the control wires from the air shield assembly through the holes on the assembly's cover as shown.



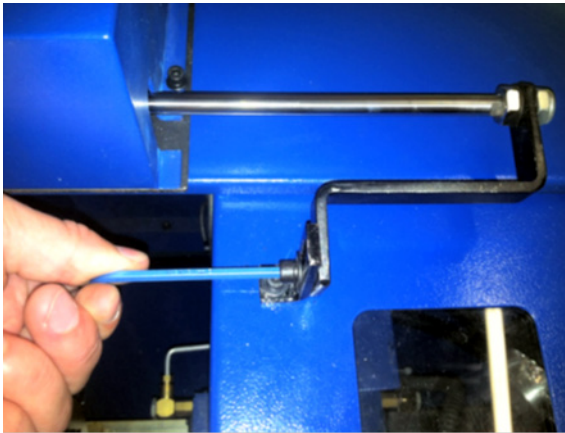
6. Replace the cover of the assembly.
7. Place the seven socket head cap screws (removed in step 1 above) through the holes around the assembly and into the enclosure. Hand-tighten only.
8. Remove the socket head cap screw that holds the "L" bracket to the piston bracket.



9. Place a socket head screw cap through the “L” bracket and tighten it to the shield. (This screw was removed in step 1 above.)



10. Use the socket head cap screw removed in step 8 above to attach the “L” bracket to the piston bracket, and tighten securely. You may have to partially loosen the seven screws around the assembly in order to perform this step.



11. Tighten the seven screws around the assembly to secure the assembly to the enclosure.

12. Remove the magnetic door plate on the shield to disable the magnetic safety lock.

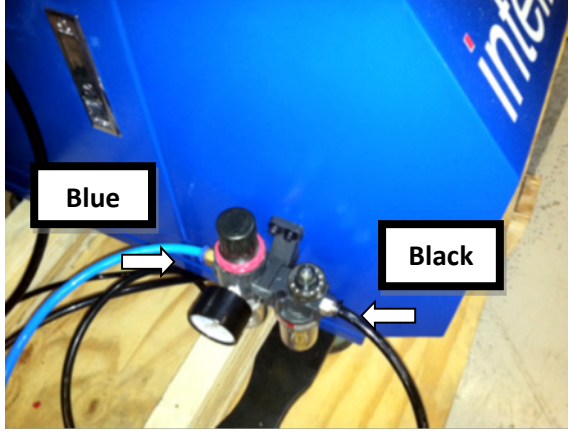


#### 4 *Install the Regulator*

1. Unscrew the pre-mounted screws located on the left side of the BenchMill 7000 enclosure.
2. Use those screws to attach the regulator to the enclosure.



3. Connect the blue and black air supply hoses to the color coded receptacles on the regulator as shown.

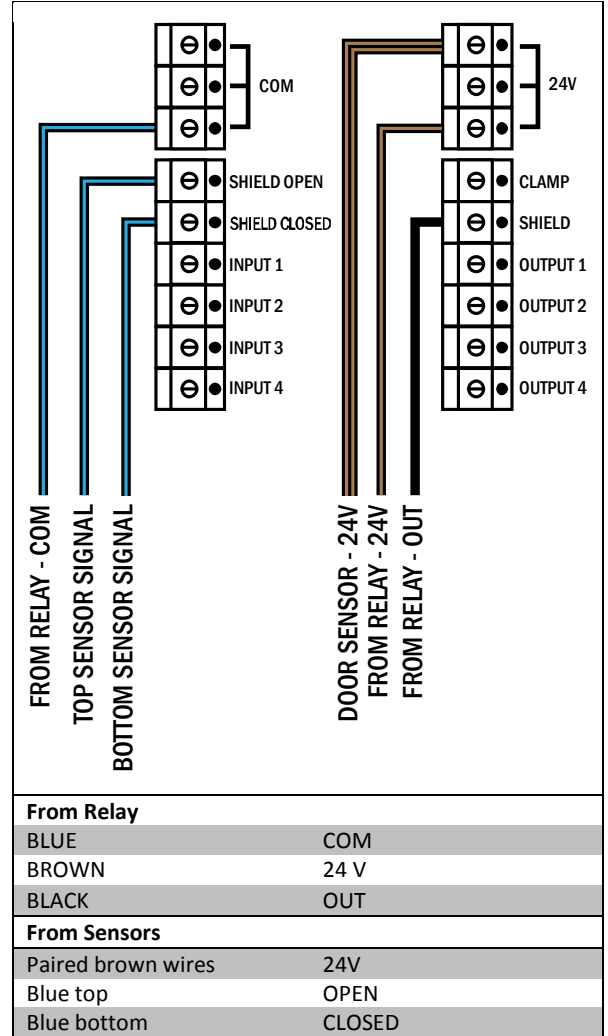


4. Connect the blue air hose to the building's air supply using the T-fitting supplied in the kit.

## 5 Connecting the Wiring

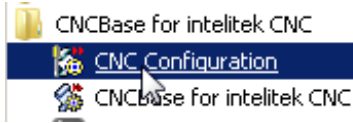
1. Connect the wires to the I/O panel at the side of the machine as shown in the I/O Panel Wiring Diagram below.

I/O Panel Wiring Diagram

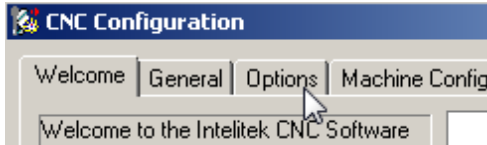


## 6 Configure the Software

1. Click **Start > All Programs > CNCBase for Intelitek CNC > CNC Configuration**.



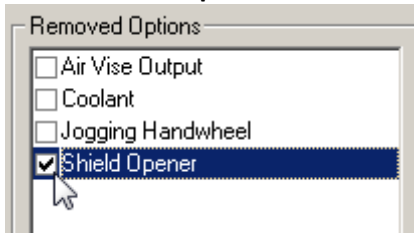
2. Click the **Options** tab.



3. Click **Reinstall**.



4. Select **Shield Opener**.



5. Click **Reinstall**.

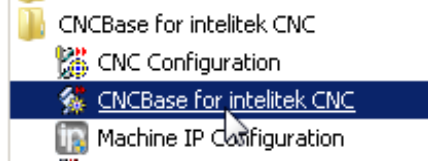


6. Click **OK** to close CNCBase.

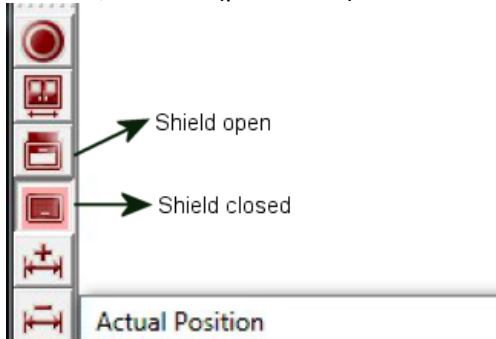


## 7 Verify Proper Shield Operation

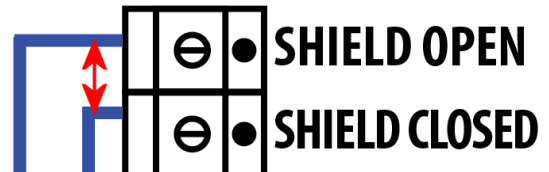
1. Launch CNCBase from your Start menu.



2. Note which of the shield state buttons, located at the lower left side of the screen, is active (pressed in).



**Note:** If the shield state indicated does not match the actual state of the shield on the machine, switch the two blue wires between SHIELD OPEN and SHIELD CLOSED.



If the shield state indicated does match the current actual state of the shield on the machine, the wiring is correct.

This completes the installation.