

Accessory Installation Guide Shield Opener With Sensors

Accessory Name	Shield opener with sensors
Accessory P/N	011106
Applicable to	ProTurn 9000

1 Requirements

To complete this installation you will require:

- A pair of cutters for cutting zip ties.

2 Unpacking Instructions

1. Remove the assembly from the crate.



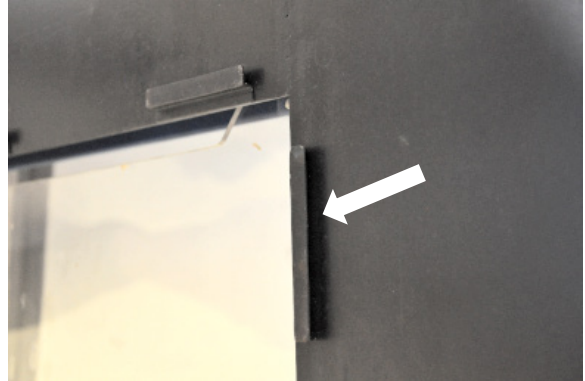
2. Verify that there are no loose parts in the crate.

3 Install the Shield Opener Assembly

1. Remove the rear panel by sliding it upwards.



2. Take note of the location of the flanges at the rear of the shield opener assembly.



3. Slide the shield opener assembly into place. The flanges at the rear of the assembly slide into the same tracks that held the rear panel in place.

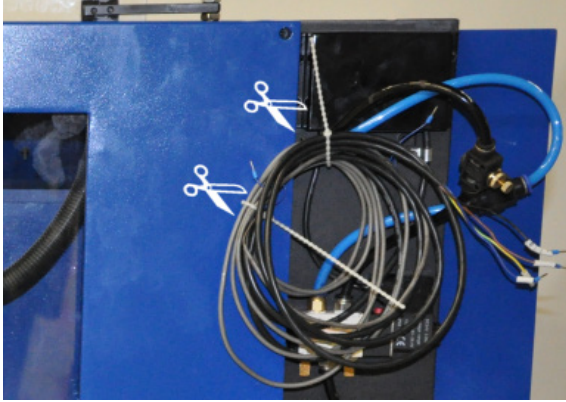


The rear of the machine should now appear as below.



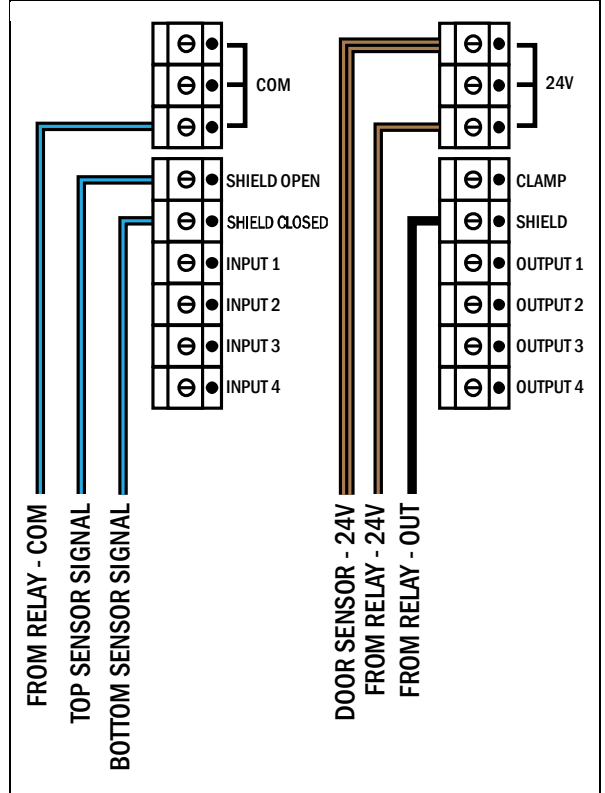
4 Connecting the Wiring

1. Cut the zip ties used to bind the shield opener assembly wires.



2. Connect the wires to the I/O panel at the side of the machine as shown in the I/O Panel Wiring Diagram below.

I/O Panel Wiring Diagram



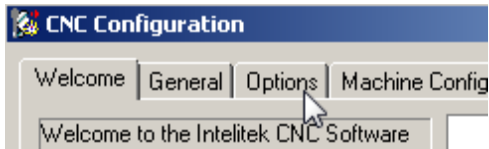
From Relay	
BLUE	COM
BROWN	24 V
BLACK	OUT
From Sensors	
Paired brown wires	24V
Blue top	OPEN
Blue bottom	CLOSED

5 Configure the Software

3. Click **Start > All Programs > CNCBase for Intelitek CNC > CNC Configuration**.



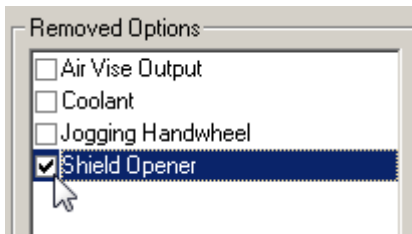
4. Click the **Options** tab.



5. Click **Reinstall**.



6. Select **Shield Opener**.



7. Click **Reinstall**.

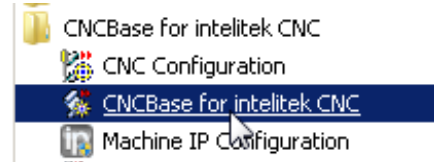


8. Click **OK** to close CNCBase.

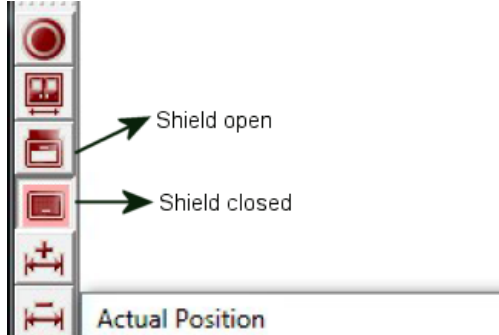


6 Verify Proper Shield Operation

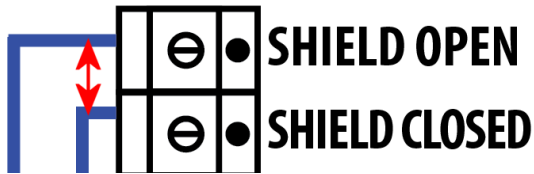
1. Launch CNCBase from your Start menu.



- Note which of the shield state buttons, located at the lower left side of the screen, is active (pressed in).



- If the shield state indicated:
 - Does not match the current actual state of the shield on the machine, switch the two blue wires between SHIELD OPEN and SHIELD CLOSED.



- Does match the current actual state of the shield on the machine, the wiring is correct.

This completes the installation.