

## Accessory Installation Guide Coolant System

Accessory Name	Coolant System
Accessory P/N	011081
Applicable to	BenchMill 6000 ProMill 8000 BenchTurn 7000 ProTurn 9000

### 1 Additional Requirements

No additional tools or parts are required.

### 2 Unpacking Instructions

1. Remove the pump assembly from the packaging.
2. Detach the small, clear tubing from the pump.

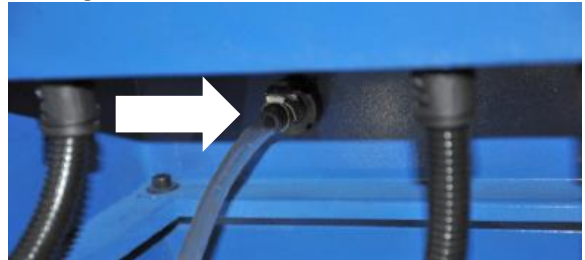


### 3 Connect the Coolant Delivery Line to the Machine

1. Connect the free end of the clear tube to the barbed fitting inside the machine enclosure. The location of this fitting

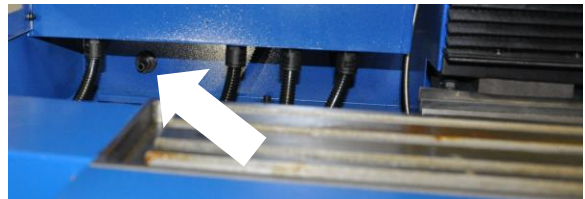
depends on the machine model, as described in the sections 3.1 to 3.4 below.

2. Tighten the tubing clamp over the barb fitting, as shown below.



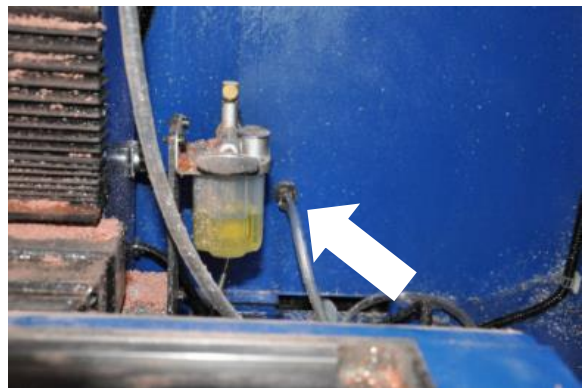
#### 3.1 BenchMill 6000

The fitting is located inside the machine, to the left of the Z-axis and below the electronics enclosure.



#### 3.2 ProMill 8000

The fitting is located on the back wall, to the right of the Z-axis.



### 3.3 BenchTurn 7000

The fitting is located just below the door on the right side of the machine.



### 3.4 ProTurn 9000

The fitting is located behind the cross-slide at the spindle end. It comes through the tray.



## 4 Connect the Drain Pipe

1. Connect the coolant drain pipe to the drain plug at the back of the machine. On the ProTurn 9000 the drain plug is in the coolant tray. On the BenchTurn 7000 the drain plug is on the right end of the machine under the access door.



2. Tighten the tubing clamp over the barb fitting.

## 5 Connect the Pump

1. Attach the coolant tubing to the barb fitting on the coolant pump.
2. Tighten the tubing clamp.



3. Plug the pump's power cable into the Coolant Power Supply port on the machine. This is located next to the Ethernet port and the PC power supply outlet.



5. Click **Reinstall**.



6. Click **OK** to close CNCBase.



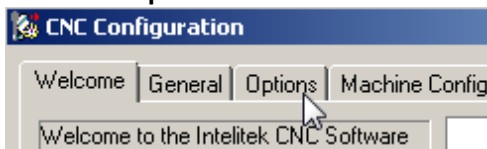
Installation complete.

## 6 Configure the Software

1. Click **Start** → **All Programs** → **CNCBase for Intelitek CNC** → **CNC Configuration**.



2. Click the **Options** tab.



3. Click **Reinstall**.



4. Select **Coolant**.

